



## HISTORY OF SCOUTING TRAIL

# History Of Scouting Trail Baden-Powell Inaugural Hike

Washington, D.C. - May, 2014

Brought to you by the National Capital Area Council, Boy Scouts of America, History Of Scouting Trail Committee, and the History & Archives Committee.

Welcome to the History Of Scouts Trail Inaugural Weekend of the BADEN-POWELL HIKE. Sir Robert Baden-Powell was the famous English General who was the Founder of Scouting in England in 1907. In 1910 he started the Girl Guides, which in some places, such as the US became the Girl Scouts. Baden-Powell visited Washington, D.C. and met with BSA leaders and helped with the building and formation of the Boy Scouts of America movement. The Baden-Powell Hike covers all areas of Scouting History- Boy Scouting, Girl Scouting and some international Scouting.

You are about to embark on the adventure called the Baden-Powell Hike. The locations and challenges up to now a secret - but now unveiled to you below. Each challenge stop you do, each location you find, each clue and mystery you uncover, and each Washington, D.C. or National Landmark you visit - all have some connection to Scouting and will help you **overcome the challenge** and ultimately complete successfully the treasure hunt course and earn the right to wear the very special medal - THE BADEN-POWELL HIKE MEDAL! Be one of the few - the proud - the Baden-Powell Hikers!

You can go in any order you wish, but you must successfully complete 18 of the 21 challenges (no more than 3 incorrect). There are clues or instructions that will take you to another challenge stop. **Read the instructions carefully.** Most mistakes come from reading the instructions or challenges too quickly or not carefully enough - word-for-word. It is NOT a race. If you do not finish one day, you can go back and finish the next. Read ALL the written text and look at all the photos - information on one page may help you solve a clue or puzzle on another page later. Most "Hints" are not hints about the answer, they are hints about how to help you **find** the answer.

- Required per person: 2 pencils, small plastic bag (supermarket size), and ability to take 7 photos, uniform (if registered), water bottle, walking shoes.

- Required per group: Clean crisp new \$5.00 bill, a compass, a magnifying glass - Optional: Lunch, Sunscreen or hats, binoculars, first aid kit, batteries

You may have heard of the famous *Detective Sherlock Holmes*, here you may get some clues from his nephew *Sherlock Scout* and his faithful companion dog - *Chevy Scout*. Listen to *Sherlock Scout's* clues carefully. At this point you should have your materials from the required list and should proceed to the starting point. You will be going to the Franklin Roosevelt Memorial in Washington, D.C. The starting point is the bronze statue of President Roosevelt in a wheelchair. **Find this statue and read on.**



## Reviewing the Boy Scouts, The White House, 1911

Pictured are, from L to R  
**Mr. Colin Livingstone**, President of the BSA,  
**Sir. Robert Baden-Powell**, Founder of Scouting,  
**US President William Taft**,  
**UK Ambassador Bryce**,  
**Maj. Archibald Butt**,  
 Assistant to the President and White House Liason to the Boy Scouts,  
**Mr. A.C. Moses**, President of the D.C. Council

1) Welcome to the start of the Baden-Powell Hike. Franklin Delano Roosevelt was the first US President to have been a member of the Boy Scouts before he became President. He was President of New York Council for over 10 years until he became President of the United States in 1933. That was a time the USA was going into a Depression, an Eagle symbol was the highest rank in both Boy Scouts and Girls Scouts, and a great World Scout Jamboree was being hosted in the most populated Scout Country in mainland Europe - Hungary. In 1921 he finally accepted the position to help Boy Scouts in New York City from the Chief Scout Executive James E. West, after turning it down 6 times! His efforts lead to one of the greatest reorganizations and build-ups of any Scout Council in the US. After entering the Office as the US President, FDR then became the Honorary President of the Boy Scouts of America and his wife, the First Lady, Eleanor Roosevelt became the Honorary President of the Girl Scouts.

**CHALLENGE #1**

*Find the US Seal from 1933, not the kind that swims in the sea,  
But the one with the highest Scout rank, and how many stars around the outside ring might there be?  
(Hint: Count carefully - there were two less states, when FDR moved to Washington, D.C.)*

**\* PHOTO \* #1**

*Sherlock Scout Says "Good Boy Chevy - you found a mate. The statue is just like you, isn't that great!  
Find that statue, using this clue, take a photo of your group with him, then move on to number two.*

2) Eleanor Roosevelt was one of the hardest working First Lady's ever to occupy the White House. Find the statue of her, and you will notice 2 interesting things. One, she was a very practical lady. She met Juliette Low several times, the Founder of the Girl Scouts USA. It is rumored that she learned to tie her shoes the same way that Juliette Low did. Juliette Low would recommend to Girls to tie their shoes with a special double knot technique, so they did not have to waste time all day long re-tying their shoes. When you find her statue - notice her shoes - there are no bows to the knot on her shoes. And, Two, one of her favorite pieces of jewelry looks like the Boy Scout emblem - which is shaped like a fleur-de-lis. Can you see it on her statue?

Mrs. Roosevelt is the starting point for the next clue. Sherlock Scout says:



**CHALLENGE #2**

*Eighty meters from here to there, this country gave a special gift to D.C.,  
South East is the direction to get to the clue, it looks very heavy to me,  
A great Scouting Country, it held a World Scout Jamboree in 1971,  
Even with a Typhoon and flooding at that event, the Scouts had lots of fun!  
What is this good Scouting Country?*

3) From this international hardened object, search for the companion piece that comes from the same country and is centuries old. It is lit in a special ceremony once each year. Which direction? - Sherlock Scout is following Chevy Scout. He looks like he has the scent and is finding the hidden companion piece.

*Chevy is wagging his tail and it looks like he is telling Sherlock:*

*Follow me, follow me, Don't go South, no sir-ee,  
Take the path, not straight I say, near the water, don't you stray,  
It curves a bit, low trees are set, don't fall off and don't get wet.  
Near the end, it's in the trees, look very well and don't you sneeze.*

*I found this thing, it's hard as stone, boy oh boy I hope there is a bone,  
It says they planted something, on a plaque I can't read, but if I could, I know it wasn't a seed,  
It happened just 2 years after the Boy Scouts were born, boy-o-boy, that plaque is worn,  
And 15 days earlier, the Girl Scouts began, in a house in Savannah, that was the plan.*

**CHALLENGE #3**

*Sherlock Scouts says using the clues and trail that Chevy Scout led you to, what date and year did the Girl Scouts start in this country?*

- 4) "Go West Young Man" they said years before, so should you and see what is in store.  
A famous man, he is honored here, see his many quotes, you are already quite near.  
This young man, in 1941, was a Tenderfoot Scout, and a preacher's son.  
Read all the quotes, it's your decision, if you read them all - you'll learn from his vision.

**CHALLENGE #4**

*Look at all the quotes on the stones, and find the one with the earliest date. How many years after this young man was a Tenderfoot Scout in a Troop in Atlanta, Georgia, was this earliest quote?*

- 5) Proceed North out of this Memorial and West along the sidewalk (footpath) of Independence Avenue until you can cross the street properly and safely. Proceed West until you see the building that is pictured on the \$5.00 bill. The Boy Scouts were the official Honor Guards for this Memorial. Though the President honored here has no association with Scouting, as he lived in the wrong century, his Memorial does. When the corner stone was being laid, the President asked that the Boy Scouts be the official Honor Guards, and they did. Four of the earliest Washington, D.C. Eagle Scouts (Eagle Scouts Reed, Gaddess, Smallwood, & Eggelston) served at the at the ground breaking in 1914. The Boy Scouts were again at the Dedication in 1922 and every major event at this Memorial. See two of the Eagle Scouts in this 1914 newspaper photo.



**CHALLENGE #5**

*How good are your detective skills? You may need your magnifier if you will,  
What major compass direction is on the building front, but NOT on the five dollar bill?*

- 6) *Sherlock Scout says to his faithful companion, there is water and restrooms here Chevy if we need a break. But then lets go to the base of the Memorial sidewalk, just above where it used to be a street.  
So stay nice and steady, here is a neat challenge -  
Chevy is all ready:*

**CHALLENGE #6**

*Is it coincidence, or was it done to honor the man,  
maybe by chance, maybe by plan,  
But the number of front steps, for what it is worth,  
plus 1800, is the year of Baden-Powell's birth.  
What year was Sir Robert Baden-Powell born?*

- 7) Make your way to the point where the WWII Memorial and the Lincoln Memorial Reflecting Pool meet (careful there may be construction). Get to the side where the only one of the 4 major compass directions is spelled out in "The Lincoln Memorial". From there look back at the Lincoln Memorial, and imagine what it was like for Scouts in 1922. Boy Scouts used to have signal contests here.



**CHALLENGE #7**

Using the chart the Girl Guides have provided, what are the Scouts spelling out in 1922?  
They had no mobile phone, they used Semaphore Code properly, and so can you!

**\* PHOTO \* #2**

Photo Challenge: Borrow a pair of Semaphore Flags (or use your arms if none are available) and have someone with your camera, take a photo of you spelling out - the FIRST LETTER of your first name, having the Lincoln Memorial in the background. Remember it - you may have to do it again later in the hike (hint, hint). Have the other person tell you if you did it right AFTER they take the photo. If they say you have done it wrong, try again with another photo.

8) When you are done, enter the WWII Memorial. IMPORTANT- this is a solemn place for many people-be quiet and respectful. If you find the answer DO NOT yell it out, or say "I found it" - QUIETLY go by yourself and write down your answer, so others may have the thrill of discovery - BE COURTEOUS.

First - Find the Boy Scout! Somewhere as part of this memorial is a Boy Scout.

**CHALLENGE #8**

Second - once you do, quietly, look at similar type places where you found the Boy Scout and count how many girls, women or females there are? Count carefully

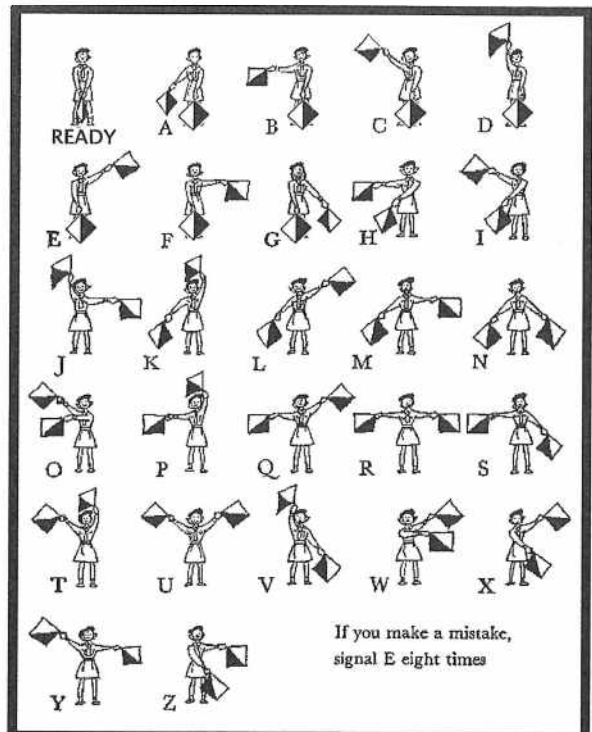
**\* PHOTO \* #3**

Now see all the names of states, territories and countries that participated with the US during WWII. Have someone take a photo of you under the state, territory or country you were born in. If the country is not there - then use the territory you are standing in.

**HIKE VERIFICATION**

Proceed quietly to the South Exit of the WWII Memorial. Here go to the Park Ranger Kiosk and tell them "I have found the Boy Scout, may I have a stamp please?" (They will not tell you where the Boy Scout is.) MAKE SURE you get this stamp as it is **REQUIRED** for completion of your card. LEADERS make sure everyone in your group has their card stamped if earned. The stamp goes in the lower right hand corner of your card.

\*\* Break Area - there are water fountains and Restrooms here if they are needed. \*\*



9) Now go back and **QUIETLY** exit the WWII Memorial area to the East then go North. Proceed safely to the corner of 17th Street and Constitution Avenue, and safely cross the street. Note - this is the same intersection you will cross back on.

Find the DAR Building (Daughters of the American Revolution) and Constitution Hall. During WWI Boy Scouts and Girl Scout planted food in War Gardens in and around this area, near the White House and on Hanes Point. See the photo with Girl Scouts and their leaders working in the War Gardens. Notice the Red Cross building in the background. This is in 1917. Members of the Women's Suffrage Association and the DAR were the ones that honored the Boy Scouts for their heroic efforts during the 1913 Suffrage Parade in Washington, D.C. They produced 50 medals to honor those Scouts. Only 3 known of those medals are still in existence today.



**CHALLENGE #9**

See if you can figure out where the photo was taken? Then find the statue memorial on the outside of the building that has the date 1890 on it. (Hint: M=1000, D=500, C=100, L=50, X=10, V=5 & I=1).

*Question - how many eagles are on the statue memorial?*

When finished proceed to the front sidewalk of Memorial Continental Hall. Observe the big door knockers. Bonus question - what animal is holding the knockers? \_\_\_\_\_ Are you sure that is what it is? (Not a challenge question).

10) One big supporter of the Boy Scouts and aide to President Taft was Major Archibald Butt. He saw the value of the Boy Scouts and helped President Taft participate with and support the new Boy Scout movement. He is pictured with Baden-Powell and President Taft in the photo at the White House taken during Baden-Powell's first visit to D.C. one year before the Girl Scouts started. The next year, after a short needed rest in Europe, he had to go back to work at the White House. He decided to go back to the USA in style, so he booked voyage on the Titanic. He never made it back. On that fateful voyage, surviving passengers recount how he bravely helped the ship's crew help passengers man the lifeboats and helped to keep order. His body was never found. It is said that the President was so distraught over the loss of his friend and work colleague, that he oversaw the committee to make a memorial and then wept at his loss at the dedication. Scouting lost a true friend in that ship disaster. The Washington Area Scout Council named their first major Scout Camp after him - "Camp Archibald Butt" before later changing the name to "Camp Roosevelt" years later. When the Camp was sold in the late 1960's it was the second oldest Scout Camp in the US.

**CHALLENGE #10**

**\* PHOTO \* #4**

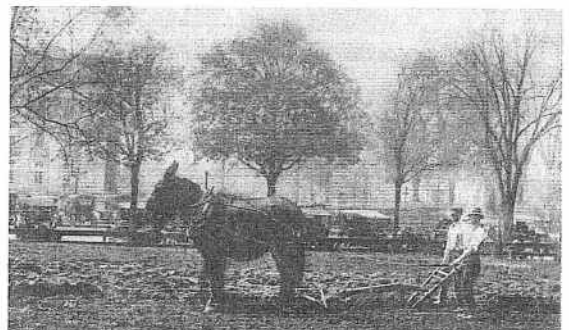
Go opposite of South and opposite of West,  
follow your compass, because this is a test.

It is not on the block that you are currently on,  
just the opposite, so be off and be gone.

Look for a memorial, you'd think it was square and quite dry,  
but it's just the opposite, so look low and look high.

A testament two brave men,

take a photo of this memorial, reminding us of Scout Law number ten.



*Chevy Scout* took *Sherlock Scout* to a place you can look North across the street and see the White House. Find this same place. The Honorary Boy Scout National President works there at his other job. If you look to the right, and see trees

toward the East, facing the Treasury Building, those grounds are where Boy Scouts plowed the area during WWI for War Gardens to help provide food. Look at the photo and see how much the area has changed.

11) *Sherlock Scout* now says, you are standing on and behind you is the block called "The Ellipse". It has a park that is an elliptical circle. If it were a clock, go to the part of the clock where the hour hand would be facing at "XV" hours after midnight.

*Chevy Scout* says - "I know, I know, there is a man and a woman and a Boy Scout, so tall,  
And oddly they don't play, they just stand on the pedestal and never, ever move at all."

You are now at the famous National Boy Scout Monument. Boy Scouts from all over the USA collected 50 dimes on a small cardboard wheel to help raise funds to pay for it. When they collected the full \$5.00 they turned in the money and wrote their name, Troop number and city on their wheel. All the completed wheels are still housed in the base of this statue.

#### CHALLENGE #11

##### \* PHOTO \* #5

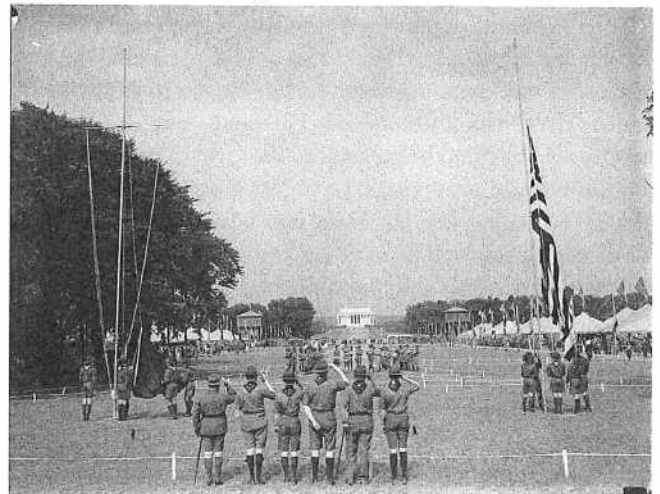
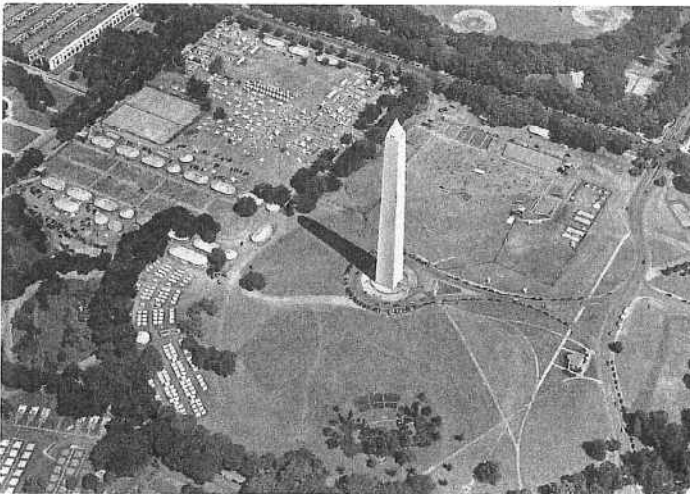
*Sherlock Scout* tells his companion *Chevy Scout* "here is a riddle I bet you will have fun figuring out":

*Knowing that the Boy Scouts started back in Nineteen Hundred and Ten,  
Use words around the pond, and find dates on the statue, and then -  
Figure out how long after the Boy Scout Anniversary was the statue erected,  
Using those words you read and the dates you selected.*

Now with your camera, have someone take a photo of your whole group with the Boy Scout Monument in the background - however unlike the Scout on the Monument, make sure everyone's feet are on the grass.

After this go to the corner you crossed over and return to the same intersection, and return to the other side of Constitution Avenue.

12) Cross over to the block where the Washington Monument is located. This is the ground where the 1937 National



Jamboree to place. Look at the 2 photos of that jamboree. The over 30,000 participants, plus staff and visitors, made the almost 50,000 inhabitants the largest encampment in Washington, D.C. since the Civil War. Notice the differences of today on the grounds from the 1937 aerial view. Next is your photo challenge:

##### \* PHOTO \* #6

Look closely at the photo on the right taken on June 30, 1937 at the opening ceremony of the National Jamboree. Your job is have at least one Scout in the photo (preferably saluting) and take a photo from the exact same spot in the same direction. (If there are no Scouts with you, then ask someone to be in your photo, even a tourist, as long as there is at least one person in your photo about the same distance as those in the original photo). Initial card when done.

Turn East and head toward the Capitol down the middle of the Mall. As you pass the Washington Monument, an

interesting bit of Scout History. Boy Scouts, led by a Scouts in New Jersey tried very hard to have a special bronze plaque placed in the Washington Monument. They attempted to collect ONE PENNY from every Scout starting February 1911 to raise the 100,000 pennies needed for this special plaque. Unfortunately there were less half that many Scouts registered in the whole country at that time. What happened to that plaque is still unknown today. Go East.

Proceed to the point in the center of the Mall that is exactly between the original Smithsonian Institution and The Smithsonian National Museum of Natural History. Once you reach this point, take out your compass and your \$5.00 bill.

**CHALLENGE #12**

*Find the only building on the Mall that displays some Boy Scout history shown by finding the major compass directions listed on the \$5.00 bill and looking in that direction.*

Write down the name of that building.

13) Proceed East and find the avenue whose name is the state that donated the land that became Washington, D.C. If you are not sure what that state is, ask someone until you find out. Proceed East along that Avenue until you arrive at a circle named after a General, a President, and a cartoon cat. Turn left.

You are now standing at the base of one of the largest bronze statues in Washington, D.C. Look across at the Capitol. The Capitol Building is the place where every Honorary National Boy Scout President is sworn in for his other job - becoming President of the United States of America. The Boy Scouts have been Honor Guards or worked at every U.S. Presidential Inauguration since 1913.

**CHALLENGE #13**

Find the V-Cut shaped flag that one of the soldiers is carrying in the statues charging toward General Grant. The Cavalry Flag is one of two items from US Civil War Cavalry Soldiers that became part of original US Boy Scout and Girl Scout equipment. All original Troop flags had this same V-Cut design. Use the clue below to find out what the other item is:

*With galloping horses, sometimes at the front with a charge,  
Usually not used by an officer, but perhaps a Sarge,  
It was an inspiration to men, got their hearts pounding so,  
For the tired and weak, it gave them "get up & go!"  
It is an instrument - not of war - many used in armies far and wide,  
Carried faithfully, by the old and young, safely by their side,  
Look ye carefully throughout these magnificent horses on the run,  
Because for the right answer, there be only one.*



**\* PHOTO \* #7**

Assemble your group and you take a group photo in front of the water (not in the water) with the Washington Monument in the background. Here you are near the building that the Honorary National Presidents of the Boy Scouts are Inaugurated every 4 years, with the help of the Boy Scouts, and later the Girl Scouts.

From here go to the General, look to the center of the pride,  
Then find the spot 3 dozen full Scout paces to the East (safely).

14) The Boy Scouts of America was born near the banks of two rivers. Water was imported from these two rivers and available to all at "The National Water Fountain".

**CHALLENGE #14**

*Today it still twists, and together they formed one; two pipes, two - two into one.  
The convergence of water, the unity of flow, once they were parted, now they are done.  
Two rivers started, supplied this special drink, only 365 days yearly, is it ever turned on,  
But now only one River, is used and listed, as the other is blurred - covered up - and gone.  
So write the name of the River from whence this water now has thus come,  
And take ONE drink-sip-taste of this River, as many Scouts, over the years, have done the same.*

15) Proceed to the North and find a memorial. It is called the Peace Monument. It is the start of Pennsylvania Avenue and the start of many Parades, including the 1913 Suffrage Parade. The Boy Scouts started in and helped staff and provide crowd control for many parades that started here as well.

**CHALLENGE #15**

The Peace Monument has two Greek goddess figures on top -that of "Grief" and "History". Grief is hiding her face. You are on part of the History Of Scouting Trail. If you ever wanted to know what History looked like - well there she is.

*What is History holding in her left hand?*

Take a look up Pennsylvania Avenue, and just think how many famous people, Presidents, Kings and Queens, Military and National Figures have gone up this street in a parade. Now you will too. At this point you will be retracing a bit of the famous Suffrage Parade Route. This 1913 parade, taking place on March 3rd, the day before Wilson's Presidential Inauguration, was one of the points in history that gained the Boy Scouts national attention at that point. The Boy Scouts were bankrupt at this point. 1913 is also the last year that Scoutmasters were officially paid. The national publicity that was gained brought in donations that helped fund and bring in support to build up both the Women's and the Boy Scout Movements.

16) Continue up Pennsylvania Avenue going North East on the North side of the street. Go until you reach 6th Street and then cross to the south side of the street. It was up to this point in 1913 that the crowds were large and the Suffrage Parade participants occupied still most of the whole street. From this point the crowds began to get closer and closer to the marchers.

**CHALLENGE #16**

As you continue North, don't get hit by a car,  
Find a Memorial, it is hard as rock,  
"About as big as a desk", named for FDR  
And nothing more than a big old block.

He called in a person, no mail did he send,  
What was the name, of his lifelong friend?



17) Go safely across the street. After 1913 the Boy Scout movement grew rapidly as the organization got lots of publicity for helping the Suffrage Parade marchers. Today the Scout Movement is all over the world in 6 continents - North America, South America, Australia, Africa, Europe and Asia. Find the world at this point.

**CHALLENGE #17**

*Sherlock Scout says: It's not the whole world in your hands, I fear,  
What continent is missing and not shown here?*

*Chevy Scout barks and says: "I know, I know, they had a World Scout Jamboree there in 1987,  
And the people who live there say, it is the closest thing to living in heaven".*

You will have also found a lone sailor. Scouting also had its sailing branch with the Mainer Scouts as part of the Girl Scouts and the Sea Scouts as part of the Boy Scouts. Sea Scouting was originally started by Baden-Powell's brother in 1910, and started in the US in 1912. By this time in 1913, the spectators and crowds were making the passage up Pennsylvania Ave. smaller and smaller. Some of the more aggressive people who did not want the women to have the right to vote and did not agree with the women became unruly and tried to disrupt the parade. This is the scene by the time the parade got to 9th Street.

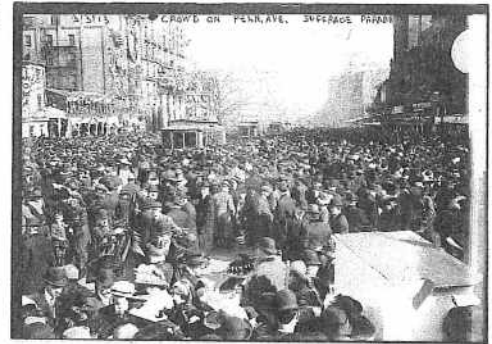




18) By the time the marchers reached the Old Post Office Pavilion, at 1100 Penn. Ave., there was much disruption and havoc in the street. Many of the women had been harassed and some injured. The head Scout Leader, Mr. E.S.



Martin, ordered 50 of his largest Scouts to protect the women from the unruly crowds. They also made stretchers with their staves to carry wounded marchers to the First Aid station and helped bandage injured women. The scene in front of the Pavilion was chaos and confusion. But though the Scouts were short, they carried and marched with a tall stick, called a stave. A stave was part of every Boy Scout Uniform in those days.



**CHALLENGE #18**

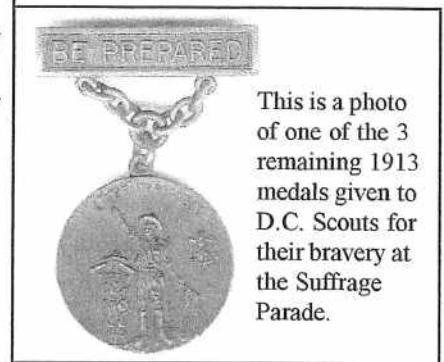
The Boy Scout were mail carriers for several countries where they had problems delivering mail. In Hungary the Scouts were the only ones trusted enough to deliver telegrams throughout their country. Even in the US during the time of WWI, the Boy Scouts were used to deliver telegrams.

*What are the words at the top of the center arch in front of the building at 1100 Penn. Ave.?*

**CIVIC GOOD TURN CHALLENGE**

From here until the end of the Hike, find and pick up 10 pieces of trash along your path. Anytime you have finished, confirm with your Hike Leader and then initial that you have completed this good turn, and have your hike leader initial also. Properly dispose of your bag of rubbish, in a proper container, when you have the opportunity. This will help the city of the District of Columbia, and show people that Scouts, even after 100 years are still "Helpful".

(Option B - if you have trouble bending, you may use as an alternative Good Turn - help provide directions to a lost tourist or person, or provide a helpful service to them, before the end of the Hike, to complete your task.)



This is a photo of one of the 3 remaining 1913 medals given to D.C. Scouts for their bravery at the Suffrage Parade.

19) Proceed North up 13th Street until you get to "G" street. Turn West. Find the bronze plaque on the sidewalk (footpath) of the founder of the Girl Scouts USA. Then find the one for the founder of the Boy Scouts.

Now find the bronze plaque that was for the founding of another organization, the "first nonsectarian" (it means for people of any religion or non-religious) organization for girls. It was founded in 1910 and was considered the "sister organization" of the Boy Scouts before the Girls Scouts were formed.

**CHALLENGE #19**

*Chevy Scout says, wagging his tail, all the girls there like me, they pet me without fail,  
Chevy asks, what is this group's name? Though now they have boys, it is still about the same!*

20) Proceed South on 14th Street until you intersect with Pennsylvania Ave. This was approximately where the Munsey Building stood in 1913 (see photo right). Go to the approximate site of where 1329 E. St. was. (Hint this part of E street is now called Penn. Ave). The Girl Scout National Headquarters was housed in room 502 from June 1, 1913 to the end of 1916. The Munsey Building no longer exists. Go to where this building was located and look at the building that is there now. Find the fifth floor of the light colored stone, not the brown colored stone. Pretend you are Juliett Low. The highest rank in Girl Scouts in the beginning was the Golden Eaglet award.



*As Juliett Low went floors up to five, she came worked in her office number five hundred and two,  
She labored hard and she did strive, and told girls "I'm bringing Scouting to you".  
At first called "Girl Guides", like Baden-Powell's girls in the UK  
Then she changed it later to the Girl Scouts, she preferred it this way.  
As she peered out her window, across the street, to the ladies and eagle perched over the door,  
Perhaps she got her inspiration for the Golden Eaglet Award, showing that Girls- "they can do more"!*

